



# CLIMATE CHANGE

&

# MY HOME

READER AND ACTIVITY BOOKLET 2

FOR

JUNIORS



## OUTLINE

### Poem:

- Rhyming words
- Sight words

### Numeracy:

- Numeral 15
- Comparison tall and short

### Literacy:

- Rhyming words 'all'
- Special vowel sounds 'ee'
- Reading Comprehension

### Game:

- What should we do?

### Writing skills

- Copy writing sentences

## Poem - The House that Joe Built

The house that Joe built is five feet off the ground,  
When the floods come, the floor is safe and sound.  
Next to the house is a very tall tree,  
So, when the heat comes, the house is as cool as can be.

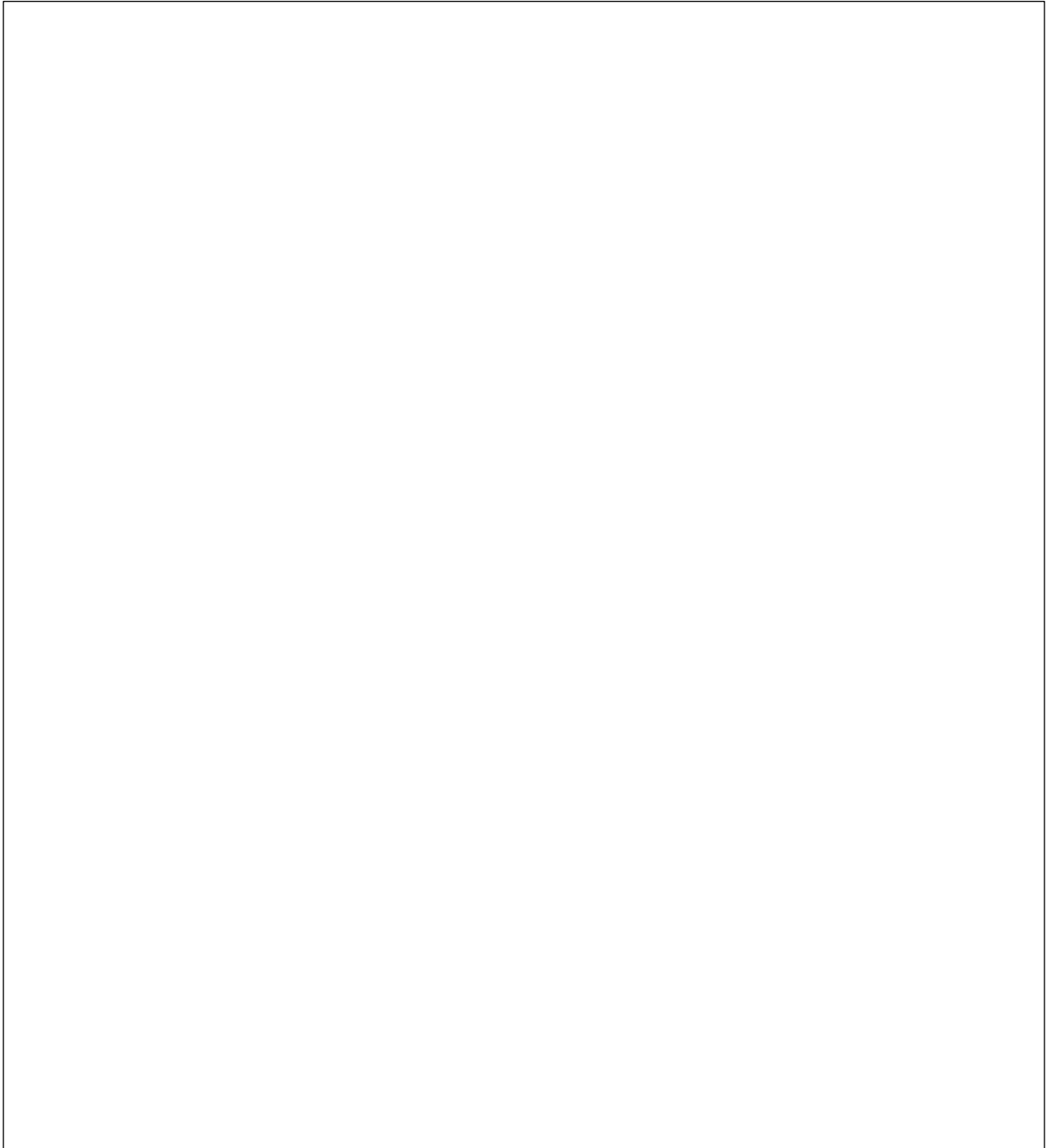
The house that Joe built has a big roof made,  
So, when the sun comes, the windows have shade.  
At the top of the walls are vents that are small,  
So, when the wind blows, it cools the hall.

The house that Joe built has a black tank that is very big,  
So, when the rain falls, he saves it to wash his pig.  
Joe's house is safe from bad weather,  
So, when too much sun or rain comes, he doesn't bother.



## Joe's House

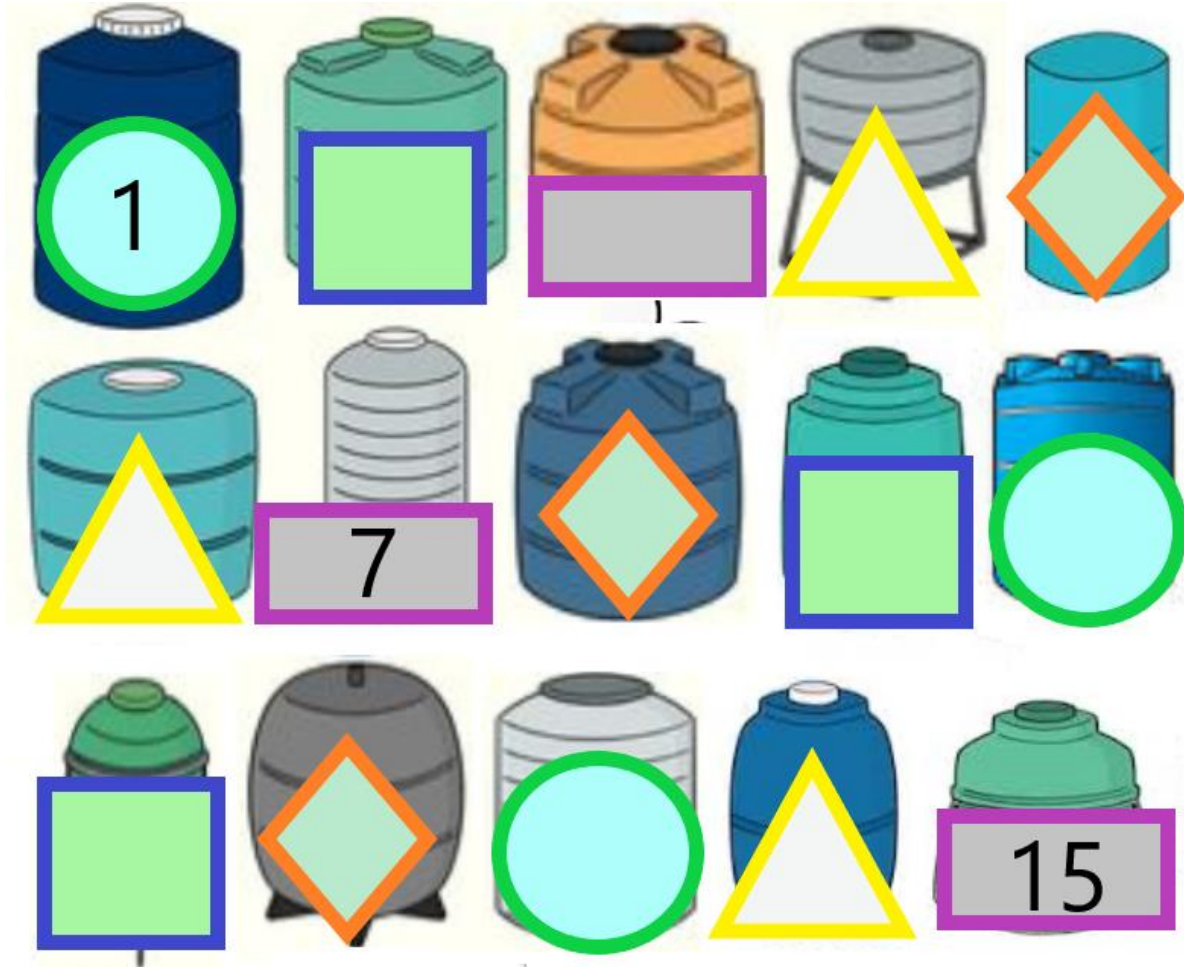
Draw Joe's house.



It is a \_\_\_\_\_ house.

# Numeral 15

Fill in the missing numbers on the water tanks. Trace and write the numeral 15 and the number name.



15 15 15

\_\_\_\_\_

fifteen

\_\_\_\_\_

fifteen

\_\_\_\_\_



## Rhyming with ALL

Underline all the words that rhyme with 'all'.

The house has a wall,  
With vents that are small,  
To let the wind cool the hall,  
And the tree that is tall,  
Shades the house from sun and rainfall.



Copy these sentences in the line below.

This house is tall.

---

---

---

The vents are small.

---

---

---

### Special Blends 'ee' words

The 'ee' in the following words make the long /e/ sound. Colour the pictures. Fill in the missing letters.



\_\_\_ ee



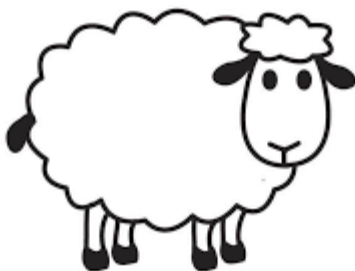
\_\_\_ ee \_\_\_



\_\_\_ \_\_\_ ee



\_\_\_ ee



\_\_\_ ee \_\_\_



\_\_\_ ee \_\_\_

## Reading Comprehension

Read the passage. Answer the questions.

The house is five feet off the ground, so the flood water does not get the floor.

The tree and long eaves shade the windows on the house.

The wind comes in from the vents on the wall and makes the house cooler.

A black tank is used to store rainwater.

The house is safe from bad weather like too much sun or rain.

The house is \_\_\_\_\_ feet off the ground.

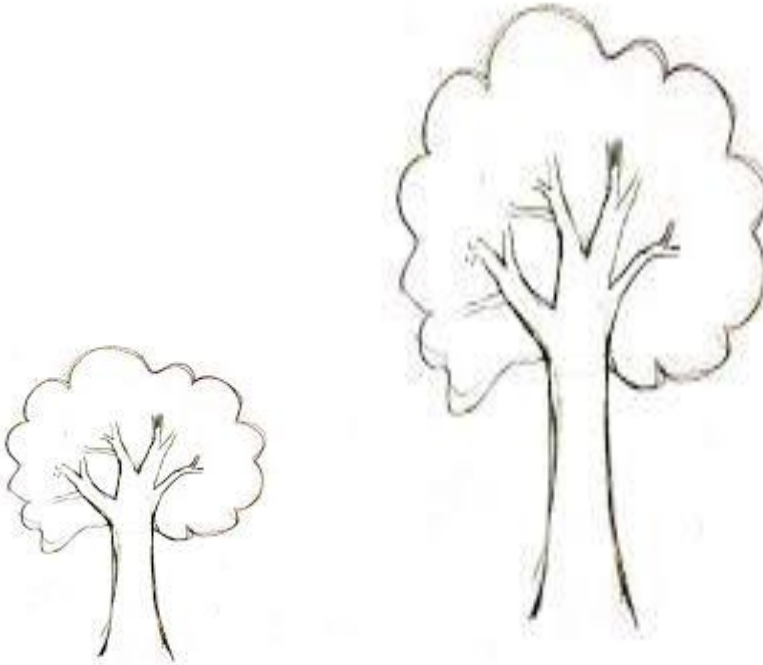
Two parts of a house are \_\_\_\_\_ and \_\_\_\_\_.

Bad weather is too much \_\_\_\_\_ or \_\_\_\_\_.

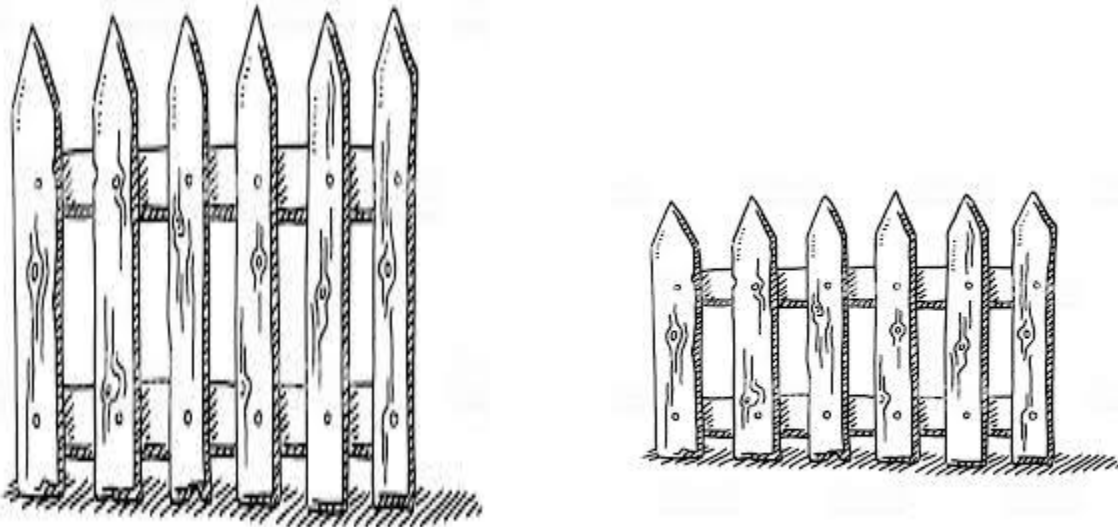


## Tall and Short

Colour the tree that is tall.



Colour the fence that is short.



## GAME - What should we do?

Circle the correct answers to the following situations.

In my house there is a **tap**.

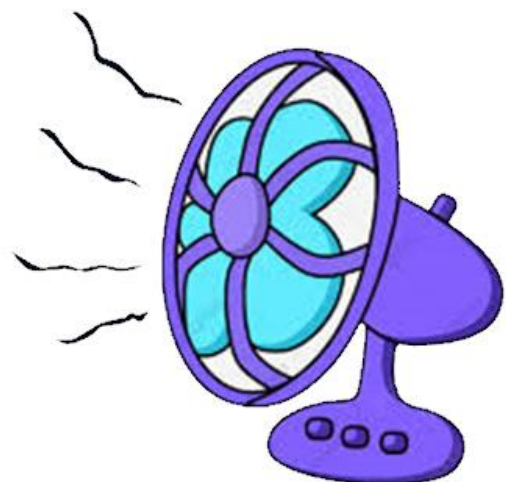
When we are done using it,  
we should



- a. Turn it off
- b. Let it drip and run to play

In my house there is a **fan**.

When no one is in the  
room, we should

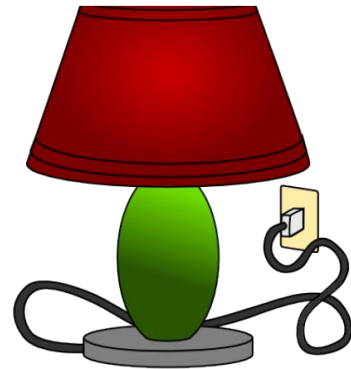


- a. Let is spin
- b. Turn it off

In my house there is a **lamp**.

When no one is using it, we should

- a. Turn it off
- b. Let it shine



*Tap, fan, light.*

*Turn all off when not in use.*

*Save money and help the climate too.*

Remember

**Rainy** or **sunny** is what the **weather** is today, my dears,

But **climate** is the **weather** over many **years**.